



# The ABCs of ADUs

A guide to  
**Accessory Dwelling Units**  
and how they expand housing options  
for people of all ages



DETACHED ADU



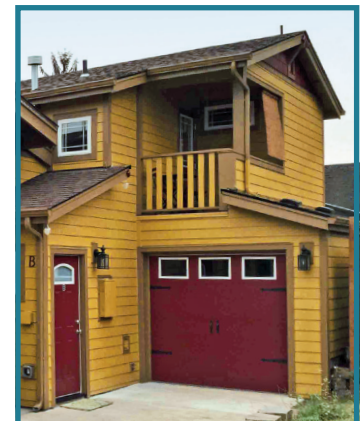
BASEMENT ADU



GARAGE-CONVERSION ADU



ATTACHED ADU



SECOND-STORY ADU

[AARP.org/ADUs](https://www.aarp.org/ADUs)



**ABOVE-GARAGE ADU**



**DETACHED-BEDROOM ADU**



**DETACHED ADU**

- An accessory dwelling unit is a small residence that shares a single-family lot with a larger primary dwelling.
- As an independent living space, an ADU is self-contained, with its own kitchen or kitchenette, bathroom and living/sleeping area. (Garage apartments and backyard cottages are each a type of ADU.)
- ADUs can enable homeowners to provide needed housing for their parents, adult children, grandchildren or other loved ones.
- An ADU can provide older adults a way to downsize on their own property while a tenant or family member resides in the larger house.
- Since homeowners can legally rent out an ADU house or apartment, ADUs are an often-essential income source.
- ADUs help to improve housing affordability and diversify a community's housing stock without changing the physical character of a neighborhood.
- ADUs are a beneficial — and needed — housing option for people of all ages.

Learn more about ADUs and  
order or download

## **The ABCs of ADUs**

by visiting

***AARP.org/ADU***

Sign up for the free, weekly

**AARP Livable  
Communities  
e-Newsletter**

Be among the first to learn when  
AARP releases more livability  
guides and resources.

***AARP.org/LivableSubscribe***

