



# Town of West Newbury Main Street (Route 113) Pedestrian Improvements

Select Board Update  
June 26, 2023

Kevin R. Dandrade, PE, PTOE





## Page School / Pipestave Improvements

- Safety Audit conducted in early 2022
- Presentation to Select Board in May 2022 – crossing improvements endorsed
- Town applied for a MassDOT Safe Routes to School grant in November 2022
- TEC is finalizing the 25% design as part of a planned MassDOT permit project for the Town – Online submittal within the next two weeks
- The focused scope of work is substantially similar to the original concept
- The preliminary construction cost estimate is approximately \$240,000





Legend:

- = Asphalt Sidewalk
- = ADA Compliant Pedestrian Curb Ramp
- = Grass
- = Proposed Pavement Apron

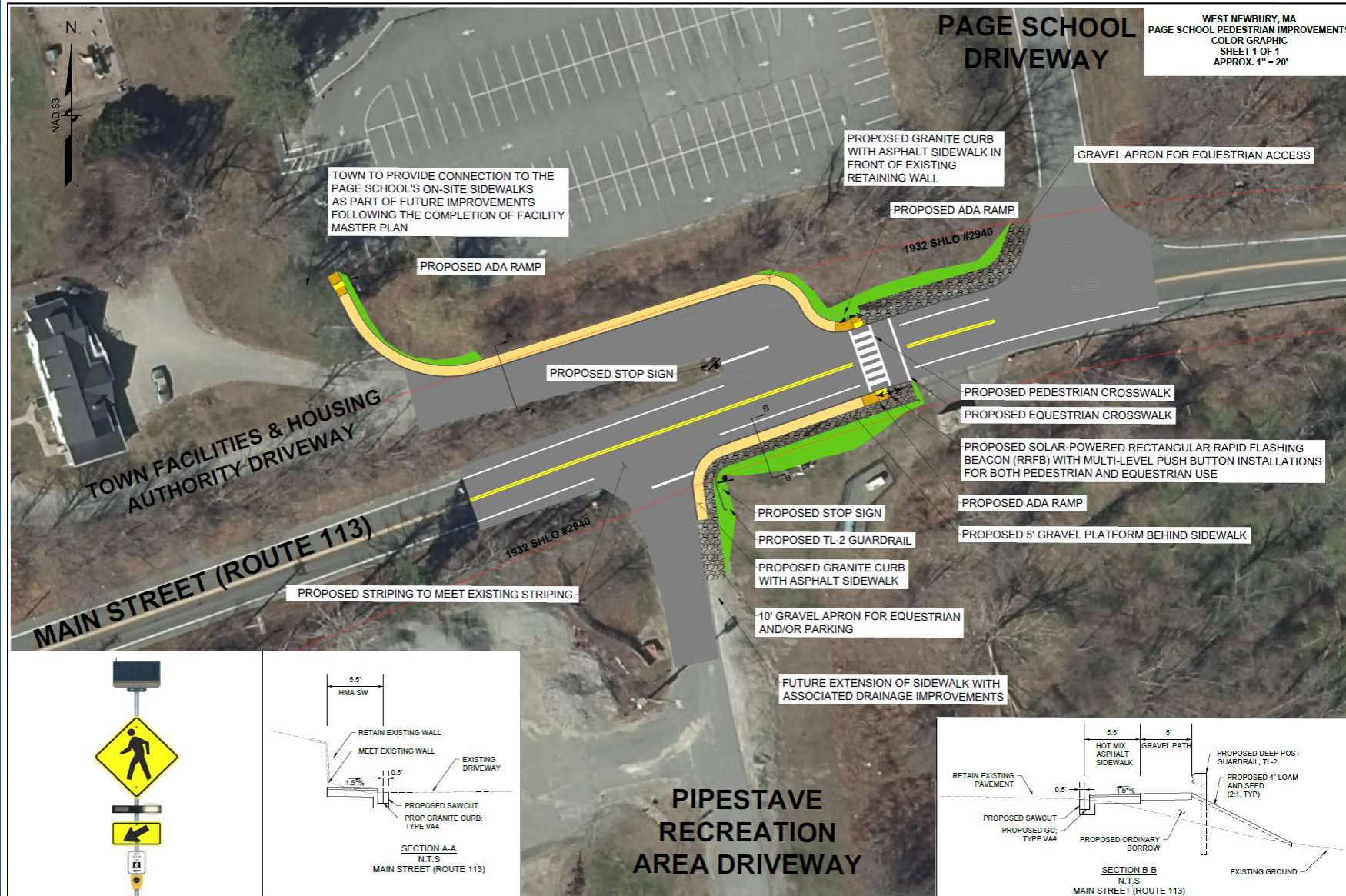
- = Existing Pavement
- = Crushed Stone
- = Rectangular Rapid Flashing Beacon
- = Proposed Retaining Wall

November 17, 2022

SAFE ROUTES TO SCHOOL IMPROVEMENTS

Dr. John C. Page Elementary School  
Main Street (Route 113) at School Access  
West Newbury, Massachusetts



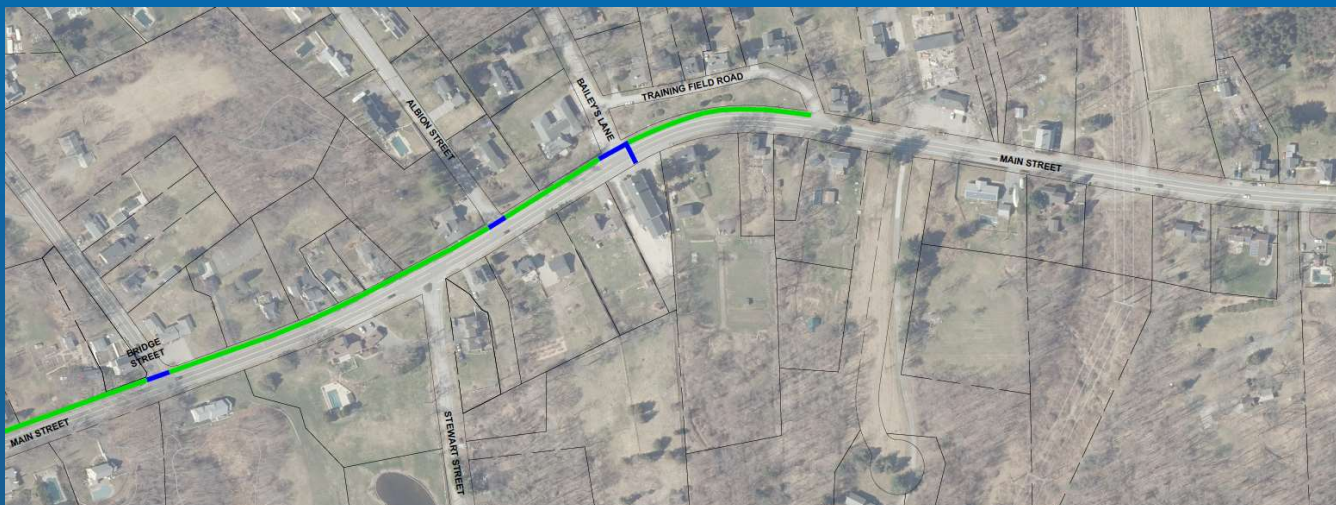




## Main Street Corridor Improvements

- Approx. 5 miles of State Highway (Rt 113) west to east
- Currently compiling existing mapping/sidewalk information and crash data
- Collecting traffic data at key locations in September
- Public engagement process in September to gain input on needs
- Working with Town staff and MVPC to coordinate multiple initiatives
- TEC will identify opportunities for corridor improvements during Fall 2023 and will present those findings in a second public meeting
- TEC will assist the Town in filing a Project Need application to MassDOT for a future State-funded infrastructure project





Project Ideas may focus on:

- Pedestrian connections and crossings (new or improved, ADA/AAB Compliance)
- Bicycle accommodations (on-road or separated)
- Traffic calming measures
- Targeted intersection improvements (capacity and safety)
- Targeted roadside safety measures (guardrail at fixed objects)
- Pavement quality