

July 20, 2023

REC'D W. NEWBURY CLERK
23 JUL 20 AM 11:05

Members of the Board,

On behalf of National Grid, please find the following information relative to a Scenic Road Application for 290 Middle Street (Map R22 – Lot 2)

National Grid has purposed the following tree work in order to supply the new dwelling at 290 Middle St. with power. Upon inspection of the proposed pole placements National Grid has determined that one multi-stem (8" + 10" Diameter) Red Maple (*Acer rubrum*) in the Town Right-of-Way will require removal given its relative location to the wire installation and its present structural defects. The Red Maple is flagged on both stems with an orange ribbon and is located at the corner of the driveway to 290 Middle St. and the town owned land along Middle St.

In addition to the one removal, current line clearance standards will require the trimming of various town trees extending from existing pole 121 on Middle St. to new pole 124. This trimming also includes the orange flagged Red Maple across from the driveway of 290 Middle St. (if further reference is required, please refer to the images of work zone attached below). The debris from both the removal and trimming will be cleaned and removed by National Grid.

The term 'Removal' refers to cutting the tree down to a 10" stump and the term 'Trimming' refers to the removal of small limbs up to 8" in diameter. All tree work is within the town layout and not private property.

We trust that the information provided regarding scope of work provides sufficient enough information for the Board's review and approval at your next hearing on August 15th. If you have any questions, please do not hesitate to call my cell phone to discuss 860-436-8996.

Thank you,

Connor Allen

National grid Forestry

Consulting Utility Forester

nationalgrid

Image below shows the
estimated pole locations and the
trees that will need to be trimmed

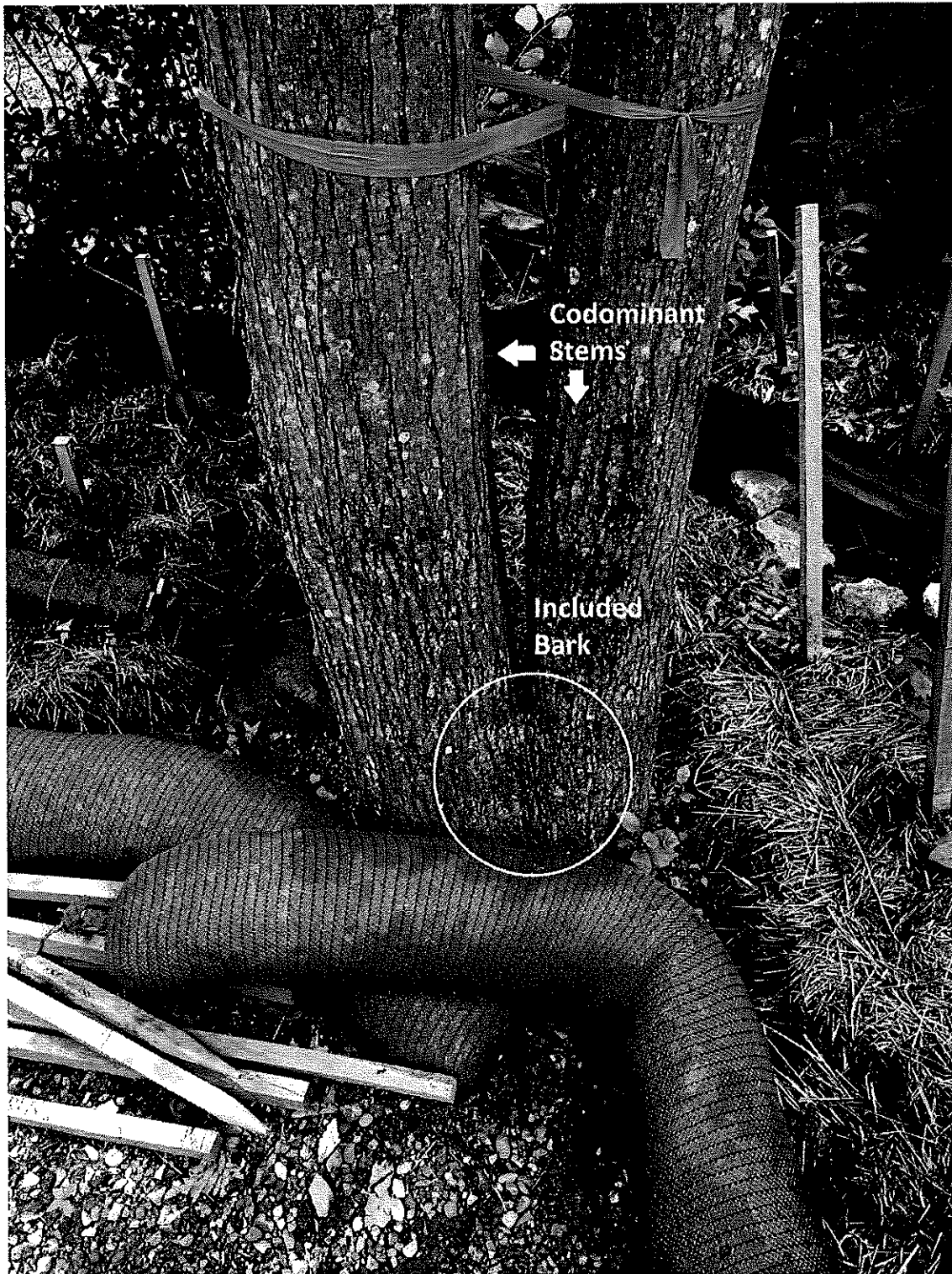


nationalgrid



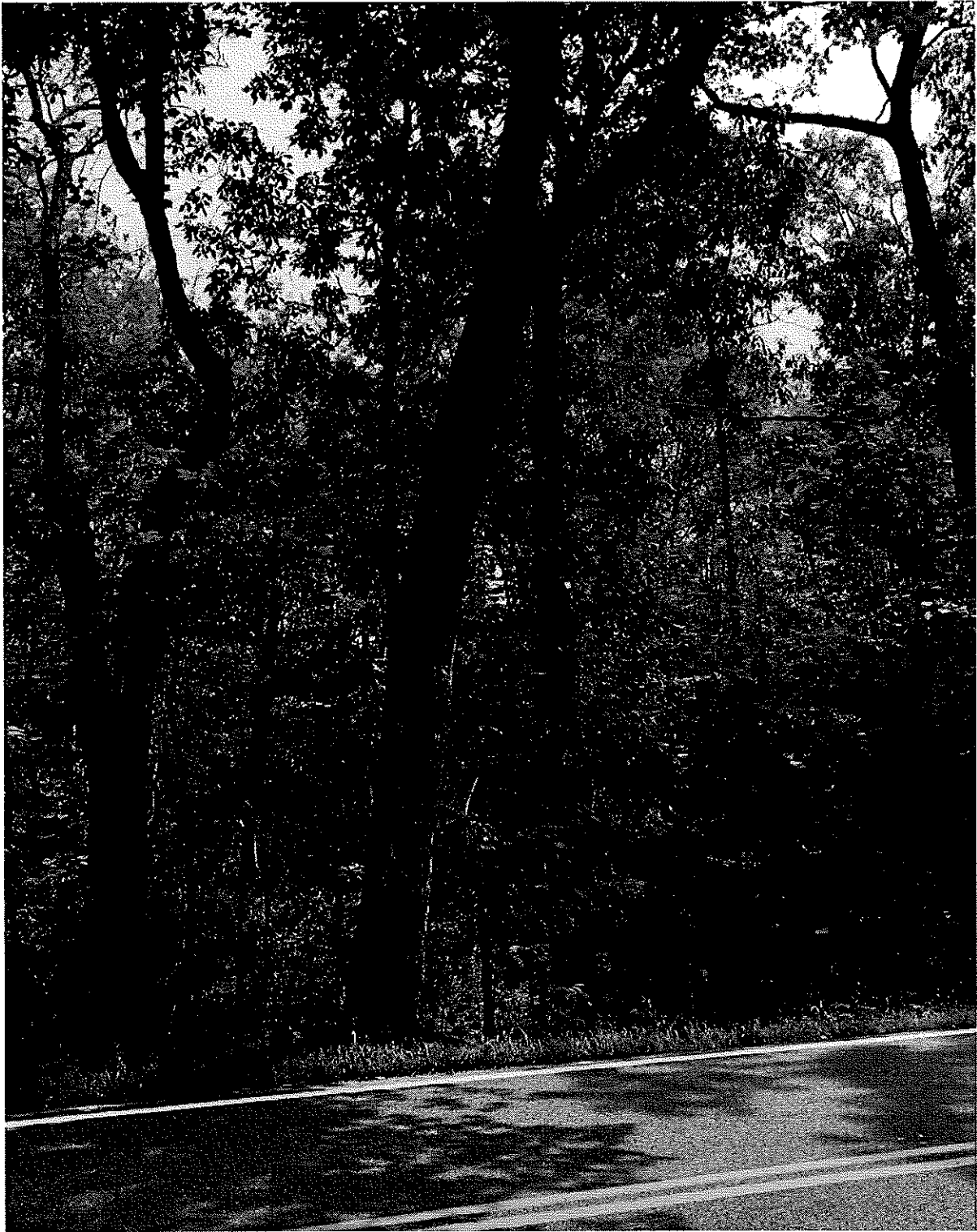
8" + 10" Red Maple to be Removed and Estimated Location of Pole : 124 (Location Has Not Been Steaked)

nationalgrid



Defects of the Red Maple are Shown Above

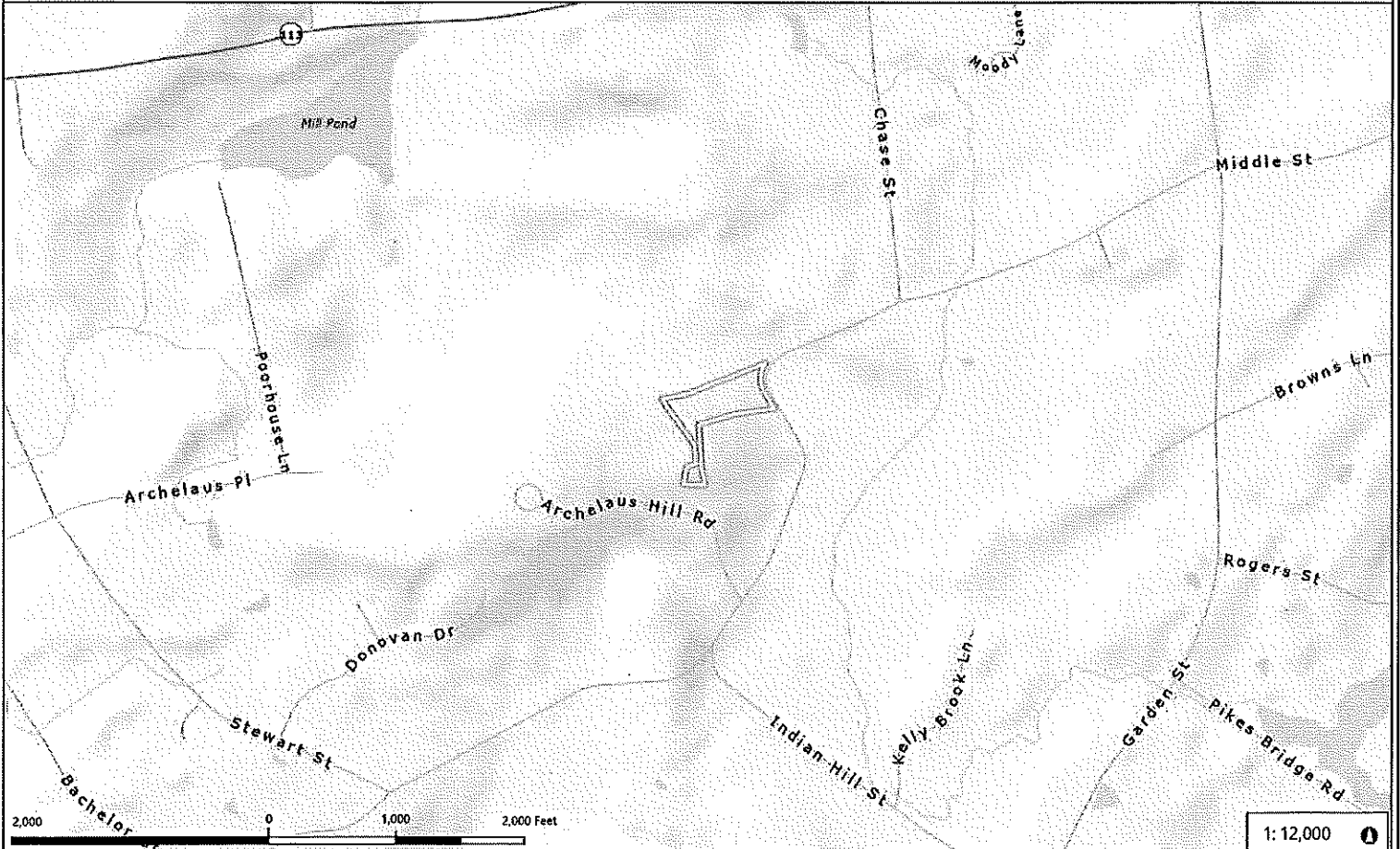
nationalgrid



Flagged Red Maple Located Across the Street from the Driveway of 290 Middle St.

Locus of 290 Middle St.

7/20/2023



Data Sources: Produced by Merrimack Valley Planning Commission (MVPC) using data provided by the Town of West Newbury & MassGIS. MVPC AND THE TOWN OF WEST NEWBURY MAKES NO WARRANTIES, EXPRESSED OR IMPLIED, CONCERNING THE ACCURACY, COMPLETENESS, RELIABILITY, OR SUITABILITY OF THESE DATA. THE TOWN OF WEST NEWBURY AND MVPC DOES NOT ASSUME ANY LIABILITY ASSOCIATED WITH THE USE OR MISUSE OF THIS INFORMATION.

Legend
 MVPC Boundary
 Building Footprints
 Roads
 Interstates
 Major Road
 Local Road
 Hydrographic Features
 Streams
 Wetlands
 Parcels
 Trails
 Easements

1:12,000

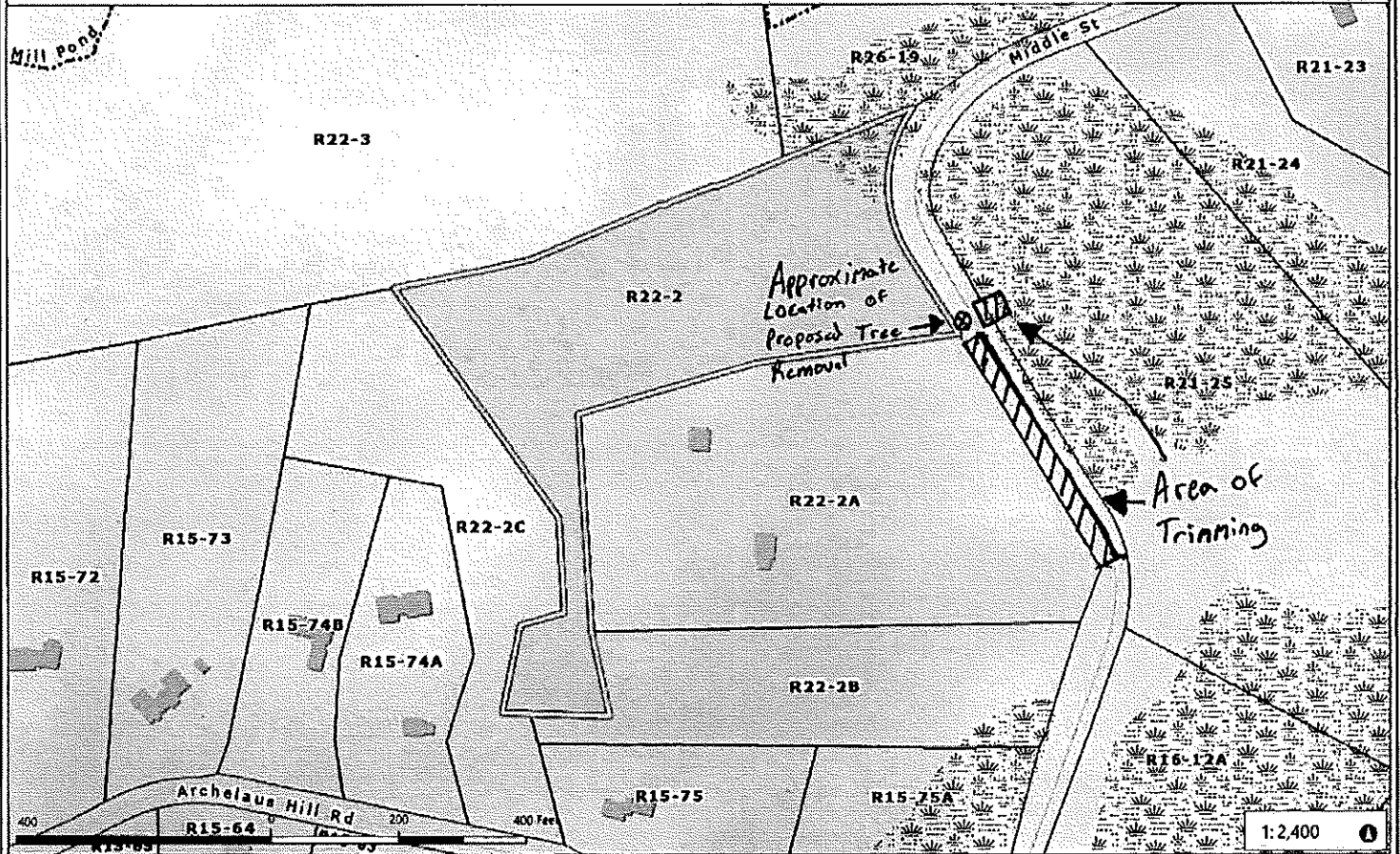


Projection: NAD, 1983, StatePlane, Massachusetts, Meters, UTM, 2001

© Merrimack Valley Planning Commission

290 Middle St. Tree Work

7/20/2023



1:2,400

Data Sources: Produced by Merrimack Valley Planning Commission (MVPC) using data provided by the Town of West Newbury & Massachusetts. MVPC AND THE TOWN OF WEST NEWBURY MAKE NO WARRANTIES, EXPRESSED OR IMPLIED, CONCERNING THE ACCURACY, COMPLETENESS, RELIABILITY, OR SUITABILITY OF THESE DATA. THE TOWN OF WEST NEWBURY AND MVPC DOES NOT ASSURE ANY LIABILITY ASSOCIATED WITH THE USE OR RESULT OF THIS INFORMATION.

Legend
 MVPC Boundary
 Building Footprints
 Roads
 Interstates
 Major Road
 Local Road
 Parcels
 Trails
 Easements
 Hydrographic Features
 Streams
 Wetlands

