



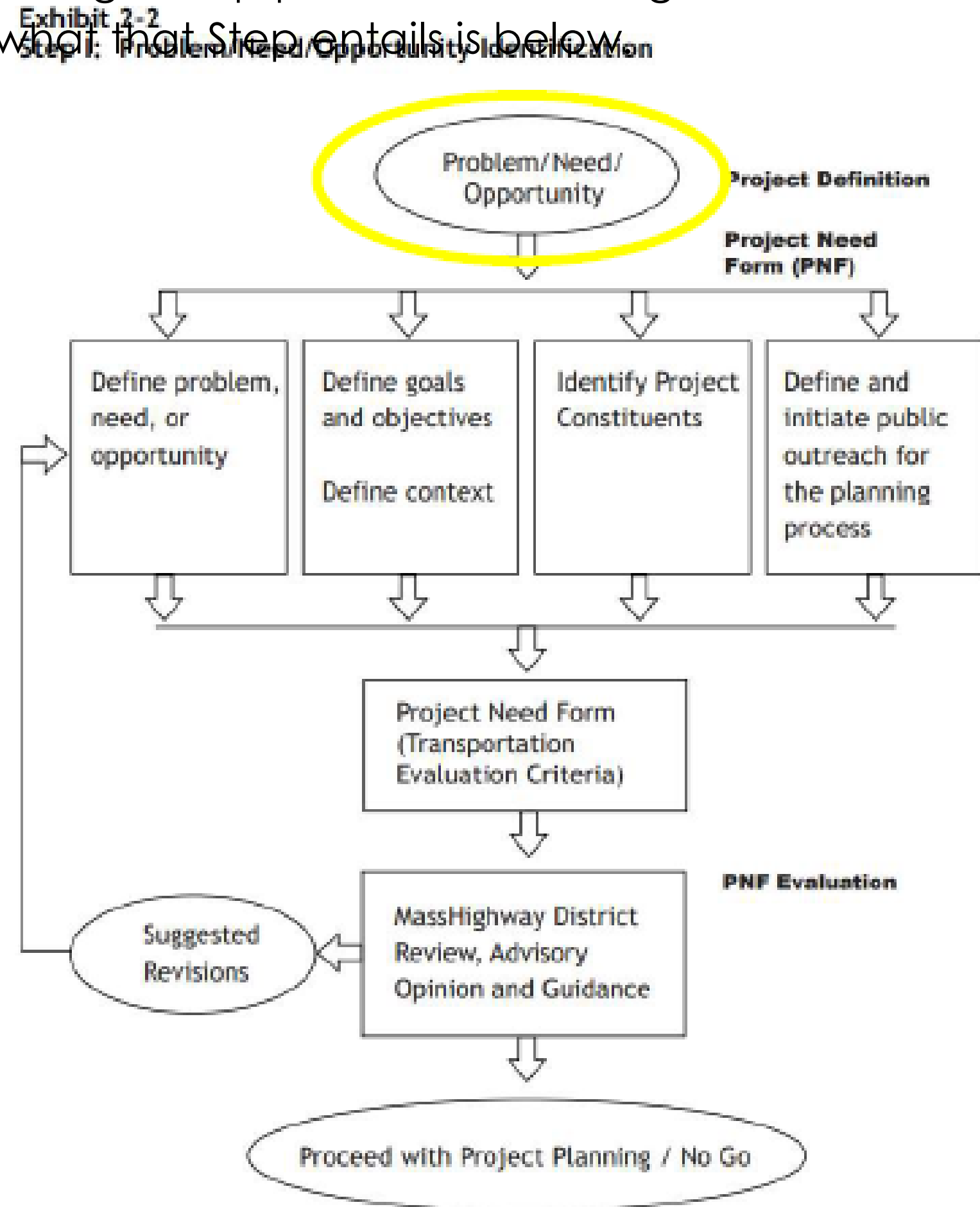
# RTE 113/MAIN ST. CORRIDOR PLANNING

## Project Overview:

At 2023 Spring Town Meeting funding was secured to initiate a conceptual planning process for the Route 113 Corridor. The corridor extends from the line with Newburyport to the line with Groveland. The scope of the process includes a specific focus on several identified “nodes”, which will receive focused design attention during this public planning process. These nodes are highlighted in orange below: Page School/Pipestave/Mill Pond; Library and Town Hall/Long Hill Orchard; Town Center vicinity including Town Offices and Housing Authority/Soldiers and Sailors Building; and the Middle High School area. The contract deliverables include conceptual planning for the corridor, and identifying pedestrian and bicycle safety improvements along the corridor and at specific focus areas. This is expected to result in several proposed and executed safety projects once advanced through the necessary engineering and permitting processes. This work will improve the Town’s competitiveness for additional state and federal funding for project construction, including through the regional Transportation Improvement Program (TIP) process administered by MVPC as the region’s Metropolitan Planning Organization. The process of upgrading Route 113, being that it is a state road, requires numerous steps for each node, and we are presently at Step One (“Problem Need/Opportunity Identification”) of the eight-step process for the Page School node. More information on just what that Step entails is below.



Image above: The “nodes” on the length of 113.



## Recent Developments:

During Spring 2023, the Town successfully petitioned MassDOT to install improved signage giving drivers more advanced notice of crosswalks at Town Offices, as well as to repaint crosswalks as part of its annual program. In June 2023, the Town obtained \$30,000 with a goal of improving the pedestrian crossing at Page School and Pipestave, as a result of a Traffic Safety Audit conducted in 2022.



Image above: The crosswalks and signage around Town Offices were enhanced during Spring 2023. As part of the broader corridor study, this location and others will be considered for potential Rapid Flasher Beacons (RFBs).

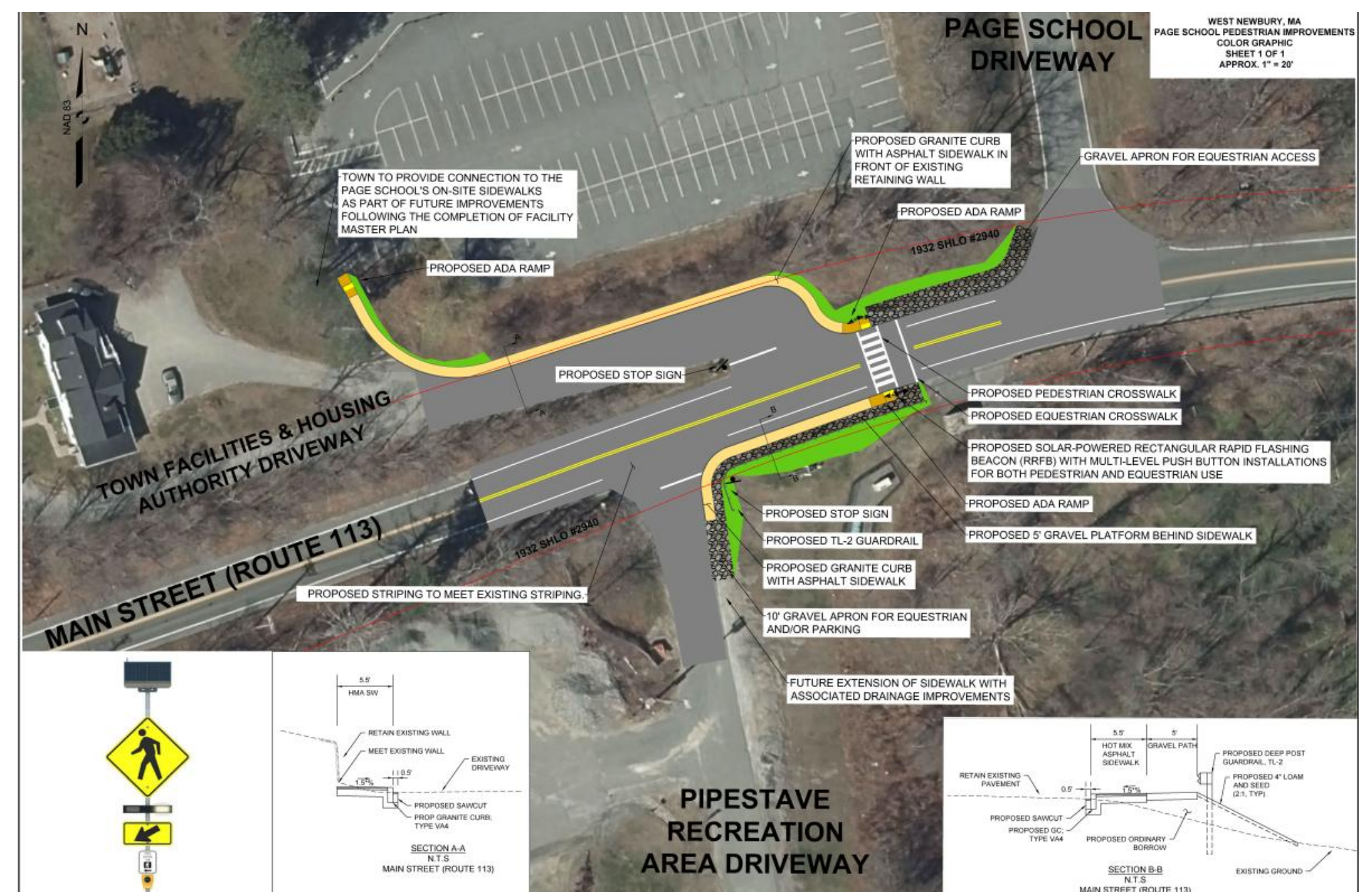


Image above: Pedestrian and equestrian crossing concept “25% Design” Plan at Page School/Pipestave Hill, submitted to the Department of Transportation by Select Board vote as part of the permitting process. The design will be further advanced through 100% permitting under the contract approved at 2023 Spring Town Meeting.

## Upcoming Steps:

Work remains underway in the previously mentioned nodes, with further activity planned throughout FY24.