



GOALS & OBJECTIVES

GOAL	OBJECTIVES TO ACCOMPLISH GOAL
Update the ash tree inventory (per numbers agreed) throughout the Town of West Newbury.	<ul style="list-style-type: none"> Trees were inventoried using Trimble® Geo GPSr hardware and ArborScope™ Inventory Management Tools, collect data such as tree name, location, and size.. Tree ID numbers were to each tree inventoried.
Provide mechanism for managing inventory, recommendations, and related budget planning.	<ul style="list-style-type: none"> Provide map or maps of the inventoried trees to assist the client in managing property areas. Submit a comprehensive report that documents and organizes findings and provides other resources to assist the client in efficient use of the information.
Maximize client understanding and implementation of the update report.	<ul style="list-style-type: none"> Include in report specific explanations and visuals related to plan recommendations. Make periodic contact with client to follow up and answer any questions about the management plan's contents.
Maximize immediate and long-term tree health and aesthetics.	Implement a plant-health-care program that uses <ul style="list-style-type: none"> Emerald Ash Borer (EAB) treatments for identified trees in the 2024 growing season
Manage immediate and long-term maintenance needs associated with trees in high-use areas.	Implement recommended tree removals <ul style="list-style-type: none"> all trees that are determined to be unsuitable for EAB treatments are recommended for removal

Project Overview:

In 2021, the West Newbury Select Board requested a report on the state of West Newbury's trees with respect to the Emerald Ash Borer (EAB) infestations. The state of East Coast ash trees is dire- untreated trees, or those otherwise unshielded from Borers, will ultimately be permanently lost. When the report was submitted, it provided us with a great roadmap to treat the Ash Borer infestation within the public rights-of-way. From its recommendations, in 2022, Bartlett Tree Experts were contracted to survey the Town's ash trees and make determinations on which trees were candidates for treating or removing. In the end, 177 of them were treated in June 2023. To the right is the Goals and Priorities matrix that guided the development of the inoculation program. Bottom right is a map indicating the location and condition (based on dot color) of the trees examined and treated.

Recent Developments:

The injection program for ash trees within West Newbury's public rights-of-way has resulted in the survival of 89 of the 177 trees that were injected. Unfortunately, last year's drought and subsequent deep Winter freeze have not helped the ash trees under attack by the EAB, and 88 of the injected ash trees were deemed to be too damaged to merit further treatment.

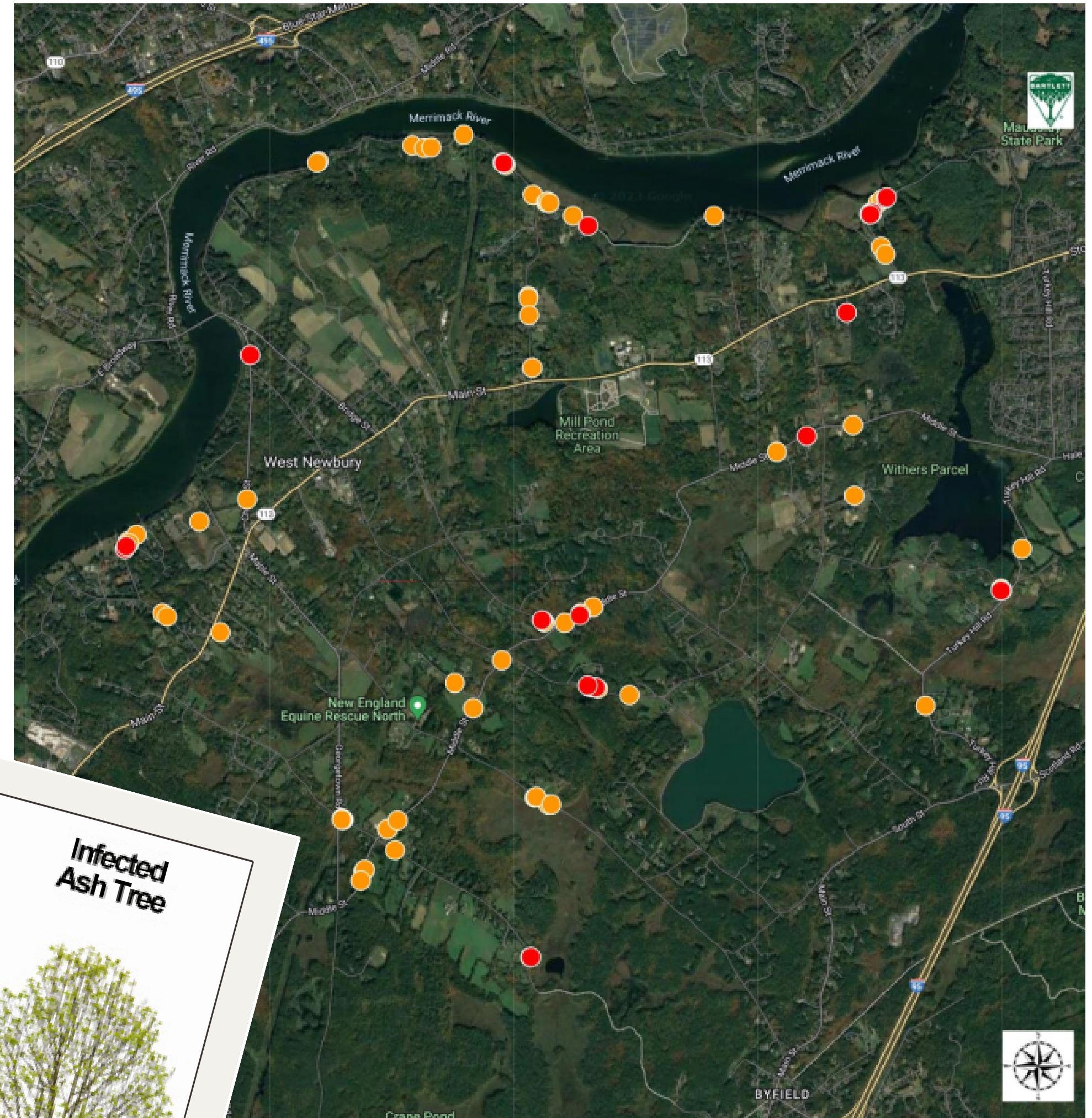
Upcoming Steps:

For the 89 survivors, further monitoring is recommended, and consideration of what's next will continue this Fall and Winter between the Select Board, Tree Committee, and Finance Committee.

How You Can Help and Where You Can Find Out More:

The Tree Committee is eager to bring aboard new members, passionate about conservation and West Newbury's flora. Presently, the Committee is in need of an associate (or even adjunct!) member.

INVENTORIED TREES BY TREES RECOMMENDED FOR EAB TREATMENT



**See a Borer?
Squash a Borer!**



The activities of the Ash Borers are visible, but often not the bugs themselves. An unhealthy tree has lost a substantial amount of its foliage or crown. In a tree infested with Borers, you may also notice evidence of birds, such as woodpeckers, making small holes trying to get through the bark to eat the Borers in the trunk. Another telltale sign is the tracks of the Ash Borer in the wood of the tree, as seen at left.

Food for Thought:

Where have you seen the evidence of the Borers on your property?



CONSERVATION INITIATIVES

Project Overview:

Many environmental, land stewardship, and conservation initiatives have taken place across West Newbury in the past few years. This poster highlights the efforts of the Conservation Commission (WNCC), Open Space Committee (OSC), and numerous hard-working volunteers and staff who have protected our natural resources and worked to restore our open spaces.

Recent Developments:

Wetlands Protection: The WNCC works hard to provide a fair and timely permitting process for applicants under the MA Wetlands Protection Act. The WNCC is also drafting a new local Wetlands Protection Bylaw with significant input from residents to strengthen protections for West Newbury's wetland resources. Stay tuned for public info sessions throughout the Winter!

Invasive Species Management: Invasive Species Interns in Summer 2022 and 2023 worked on mapping and removal of invasive plants on Town-owned land. The program will be changing in Summer 2024 to a land steward program with expanded duties to include trail maintenance and conservation restriction baseline monitoring. Additionally, by Town Meeting votes, \$70,000 has been allotted for professional invasive plant management and land restoration. This work is already underway as of September 2023. Community members and Town staff continue to participate in intensive invasive plant removal days, pulling bittersweet, autumn olive, and water chestnuts, among other invasive plants.

Conservation Land: At Fall Town Meeting, we voted to preserve acreage at 114 Ash St. with our partners at Essex County Greenbelt to be permanently protected against development for use as wildlife habitat and farmland. Prior to this, West Newbury got a conservation restriction to protect over 50 acres of land on Coffin Street in 2022. Acquisition of the Sawmill Brook Parcel abutting Mill Pond is currently in motion with materials in the state's hands for review. In support of the Saw Mill Brook land acquisition the Town was recently awarded a state LAND grant of \$394,800!

How You Can Help and Where You Can Find Out More:

There are many ways for residents to engage with the WNCC and OSC and take part in land management:

- Stay up to date on conservation news, events, and information by subscribing to updates on the WNCC and OSC Town webpages.
- Attend the public engagement sessions this winter to learn more about the proposed wetlands protection bylaw and have your feedback heard
- Roll up your sleeves and join your neighbors for invasive plant removal workdays
- Learn more about invasive plants and how you can manage them with info on the WNCC's webpage
- Volunteer on the Conservation Commission or Open Space Committee



Food for Thought:

What's your favorite open space in Town?

