



PAGE SCHOOL CONDITIONS ASSESSMENT

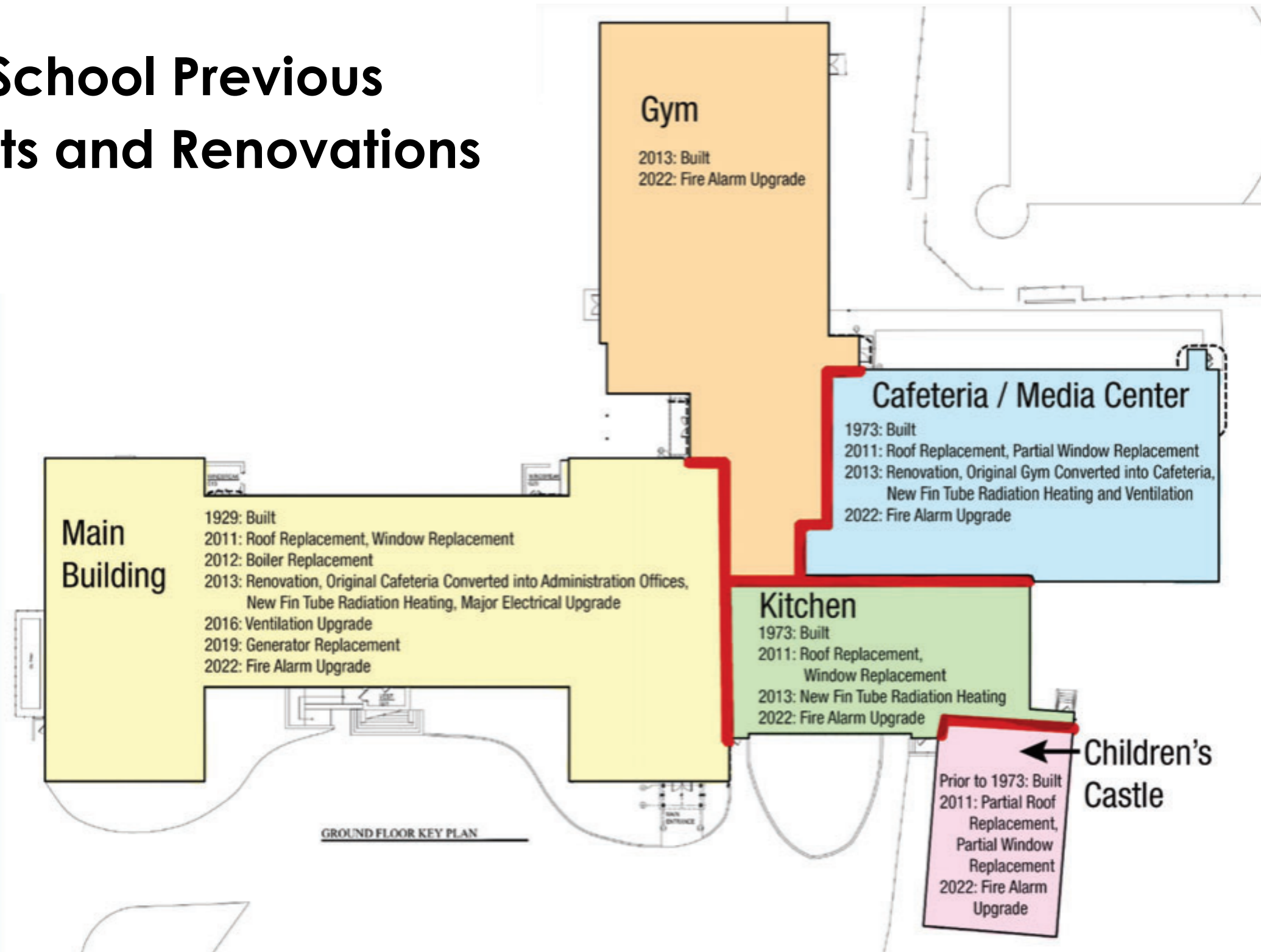
Project Overview:

To assist with decision-making on the future of the Page School, an updated evaluation of the building was called for. Voters at the 2022 Spring Town Meeting appropriated \$85,000 for a Conditions Assessment for the Page School. The first step of this Study/Assessment included the formation of a Working Group to recommend how best to scope the study prior to selecting a consultant. In September 2022, the Select Board appointed this group comprised of citizen, Town, and Pentucket Regional School District (PRSD) representatives. In preparing this scope, the Board's goal was to draw from a wide breadth of understanding from residents, Town, and School personnel. A previous Assessment Study was performed in 2009 but many changes have taken place over the past decade, including significant upgrades to the building, major water damage, and gradual reductions in enrollment. The building has a long list of capital needs which is updated annually based on collaborative efforts of the Town (which owns the building, and is responsible for capital improvements) and the Pentucket Regional School District (which leases and maintains most of the building, other than the portion leased to the Children's Castle). In December of 2022, the Draft Scope Outline was presented to the Select Board. The Board authorized the procurement process to begin for selecting a Consultant. The Request for Qualifications (RFQ) with the final scope was issued in the Spring of 2023, and Gienapp Architects were selected as the preferred consultant. They began work in July of 2023.

Recent Developments:

Gienapp Architects conducted a comprehensive Conditions Assessment of our elementary school and the Children's Castle next door. Below, you can see the breakdown of the Page School into its composite parts, including dates of construction and dates of renovation and improvement.

Page School Previous Projects and Renovations



Upcoming Steps:

Gienapp Architects provided the Select Board with a Summary of Conditions matrix and a series of scenarios for repurposing, renovation, selling, or demolishing the Page School to help guide the community on next steps regarding the use and maintenance of the building. The project is concluding at the end of 2023.

Food for Thought:

What do you envision for the future of Page School? Did you attend or your kids attend it? What memories do you have of your time there?

Summary of Conditions

Issue	Main Building	Kitchen	Gym	Cafeteria / Media Center	Children's Castle
Exterior Wall Insulation	Insufficient	Insufficient	Ok	Insufficient	Insufficient
Exterior Masonry	Condition	Ok	Ok	Ok	Ok
Floor Structure	Condition	Ok	Ok	Ok	Ok
Electrical (Power, Lighting)	Ok	Ok	Ok	Ok	Ok
Heating	Ok	Ok	Ok	Ok	Ok
Air Conditioning	Potential	Potential	Potential	Potential	Potential
Ventilation	Ok	Ok	Ok	Ok	Via Windows
Fire Protection (Fire Pump)	Condition*	Condition	Condition	Condition	Condition
Fire Protection (Distribution)	Potential	Potential	Potential	Potential	Potential

Red Items = Words displayed on red cells indicate specific concern. For example, "condition" indicates there is a concern about the condition.

Potential = Potential for Improvement

* = Indicates location of equipment

10/13/2023

